



SIARAN MEDIA

Media Release

INDEKS HARGA PENGGUNA

Consumer Price Index

(Jan 2015=100)

DISEMBER DAN TAHUNAN

December and Annual

2019



**JABATAN PERANCANGAN EKONOMI DAN STATISTIK
KEMENTERIAN KEWANGAN DAN EKONOMI**

**TAJUK UTAMA: INDEKS HARGA PENGGUNA (IHP) MENINGKAT SEBANYAK 0.3 PERATUS
TAHUN-KE-TAHUN BAGI BULAN DISEMBER 2019**

1. IHP bagi bulan Disember 2019 meningkat sebanyak 0.3 peratus tahun-ke-tahun berbanding dengan bulan Disember 2018. Harga Makanan dan Minuman Ringan mencatatkan penurunan sebanyak 0.4 peratus. Manakala, harga Bukan Makanan mencatatkan peningkatan sebanyak 0.4 peratus.
2. Peningkatan IHP yang utama adalah disebabkan oleh peningkatan harga dan kos Restoran dan Hotel (5.2 peratus); Perhiasan, Peralatan Isi Rumah dan Penyelenggaraan Rutin Isi Rumah (2.7 peratus); dan Rekreasi dan Kebudayaan (1.6 peratus). Walau bagaimanapun, ianya diimbangi oleh penurunan dalam harga dan kos Pengangkutan (2.3 peratus); Perumahan, Air, Elektrik, Gas dan Bahan Api Lain (1.6 peratus) dan Makanan dan Minuman Ringan (0.4 peratus).
3. Harga Restoran dan Hotel meningkat berikutan peningkatan harga bagi beberapa hidangan terpilih di restoran dan kafe, perkhidmatan katering luar dan perkhidmatan penginapan. Manakala, peningkatan harga Perhiasan, Peralatan Isi Rumah dan Penyelenggaraan Rutin Isi Rumah mengambilkira peningkatan harga tekstil, perkakasan isi rumah dan barangan isi rumah yang tidak tahan lama. Peningkatan dalam Rekreasi dan Kebudayaan pula adalah disebabkan oleh peningkatan harga peralatan alat tulis, pakej percutian dan barangan untuk haiwan peliharaan.
4. Bagi perubahan bulan-ke-bulan, IHP bagi bulan Disember 2019 meningkat sebanyak 0.2 peratus berbanding dengan bulan November 2019. Indeks Makanan dan Minuman Ringan dan Indeks Bukan Makanan masing-masing menunjukkan peningkatan sebanyak 0.1 peratus dan 0.2 peratus.
5. Bagi keseluruhan tahun 2019, IHP menurun sebanyak 0.4 peratus berbanding dengan 2018. Indeks Makanan dan Minuman Ringan dan Indeks Bukan Makanan masing-masing menunjukkan penurunan sebanyak 0.7 peratus dan 0.3 peratus.

6. IHP mengukur perubahan harga barangan dan perkhidmatan yang dibayar oleh pengguna dalam satu tempoh masa yang ditetapkan dan dikumpulkan setiap bulan. Senarai barangan dan perkhidmatan dalam IHP adalah berdasarkan maklumat perbelanjaan purata sebuah keluarga yang diperolehi melalui Kajian Perbelanjaan Keluarga. Laporan penuh IHP bagi bulan Disember dan Tahunan 2019 boleh didapati melalui laman sesawang JPES: www.deps.gov.bn.

INDEKS HARGA PENGGUNA (IHP)

DISEMBER DAN TAHUNAN 2019



IHP mengukur perubahan harga pada sebakul tetap barangan dan perkhidmatan yang dibeli oleh sebahagian besar isi rumah di Negara Brunei Darussalam.



INDEKS HARGA PENGGUNA (IHP)

DISEMBER 2019



Tiga Penyumbang Utama Kepada Perubahan Tahun-ke-Tahun

1



Restoran dan Hotel

▲ 5.2

Harga bagi beberapa hidangan terpilih di restoran dan kafe; perkhidmatan katering luar; dan perkhidmatan penginapan

2



Perhiasan, Peralatan Isi Rumah dan Penyelenggaraan Rutin Isi Rumah

▲ 2.7

Harga tekstil; perkakasan isi rumah; dan barangan isi rumah yang tidak tahan lama

3



Rekreasi dan Kebudayaan

▲ 1.6

Harga peralatan alat tulis; pakej percutian; dan barangan untuk haiwan peliharaan

INDEKS HARGA PENGGUNA (IHP)

TAHUNAN 2019



Tiga Penyumbang Utama Kepada Perubahan Tempoh-Ke-Tempoh

1



Pengangkutan



Harga kereta; tiket penerbangan; dan alat ganti kenderaan

2



Perumahan, Air, Elektrik, Gas dan Bahan Api Lain



Harga sewa kediaman; bahan untuk penyelenggaraan dan pembaikan kediaman; dan lain-lain perkhidmatan untuk penyelenggaraan

3



Makanan dan Minuman Ringan



Harga biskut; mi; roti; sayur-sayuran; telur; dan produk-produk tenusu



MEDIA RELEASE
DEPARTMENT OF ECONOMIC PLANNING AND STATISTICS
MINISTRY OF FINANCE AND ECONOMY

**HEADLINE: CONSUMER PRICE INDEX (CPI) INCREASED BY 0.3 PER CENT
YEAR-ON-YEAR IN DECEMBER 2019**

1. *The CPI in December 2019 increased by 0.3 per cent year-on-year compared to December 2018. Prices of Food and Non-Alcoholic Beverages has recorded a decrease of 0.4 per cent. Meanwhile, Non-Food has recorded an increase of 0.4 per cent.*
2. *The CPI increase was largely attributed to increases in the prices and costs of Restaurants and Hotels (5.2 per cent); Furnishings, Household Equipment and Routine Household Maintenance (2.7 per cent); and Recreation and Culture (1.6 per cent). However, this was moderated by decreases in the prices and costs of Transport (2.3 per cent); Housing, Water, Electricity, Gas and Other Fuels (1.6 per cent) and Food and Non-Alcoholic Beverages (0.4 per cent).*
3. *Prices of Restaurants and Hotels increase due to a rise in prices of selected dishes in restaurants and café, outdoor catering services and accommodation services. Meanwhile, the increase in the prices of Furnishings, Household Equipment and Routine Household Maintenance was due to increases in textiles, household utensils and non-durable household goods. The increase in Recreation and Culture was due to a rise in prices of stationery, package holidays and articles for pets.*
4. *On a month-on-month basis, the CPI in December 2019 increased by 0.2 per cent compared to November 2019. The Food and Non-Alcoholic Beverages Index and the Non-Food Index have increased by 0.1 per cent and 0.2 per cent, respectively.*
5. *For the whole year of 2019, the CPI decreased by 0.4 per cent compared to 2018. The Food and Non-Alcoholic Beverages Index and the Non-Food Index have decreased by 0.7 per cent and 0.3 per cent, respectively.*

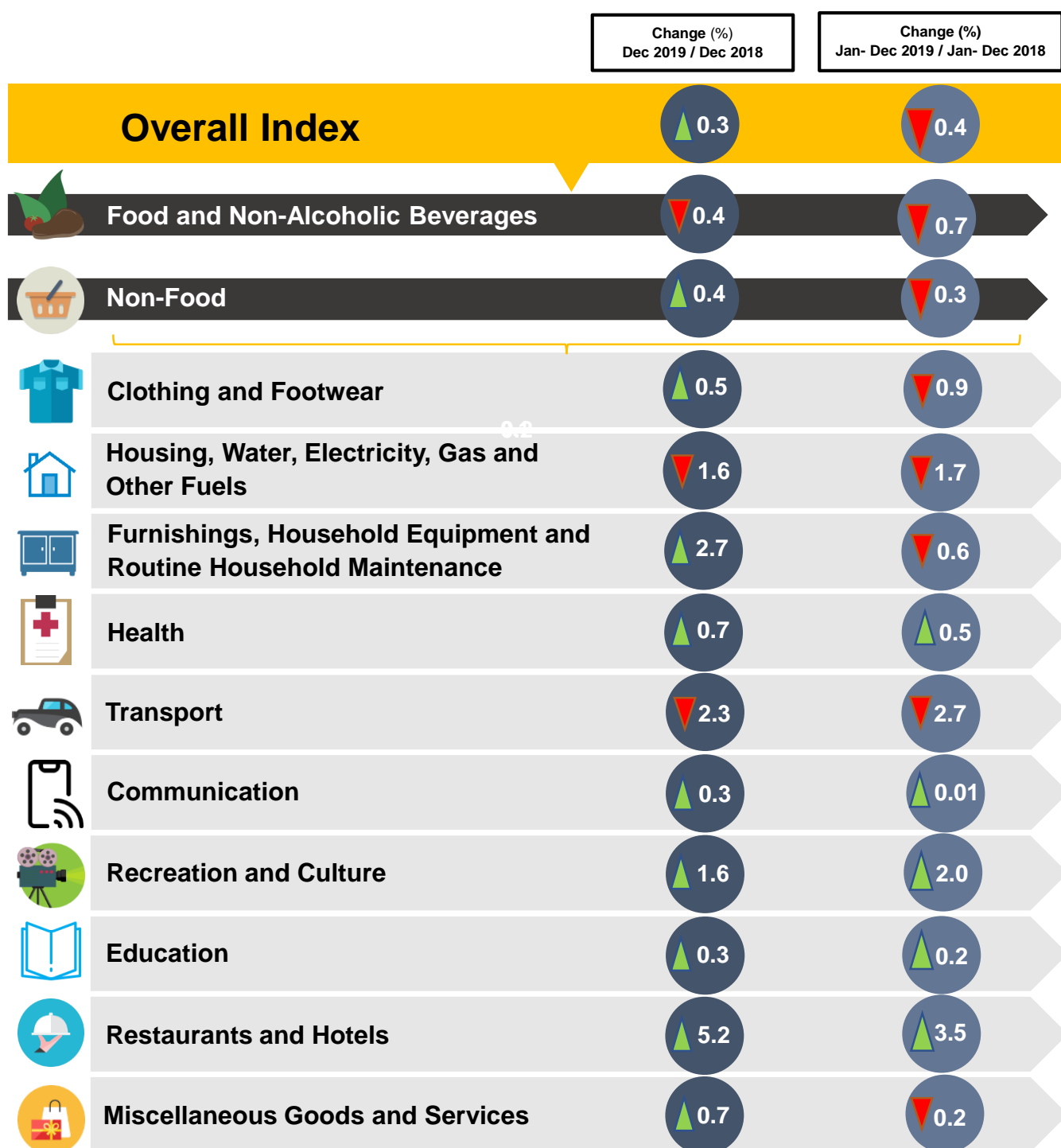
6. *The CPI is a measure of price changes of goods and services paid by the consumer in a specified period and compiled on a monthly basis. The list of goods and services in the CPI is based on the average expenditure per household from the Household Expenditure Survey (HES). The CPI full report for December and Annual 2019 is available from DEPS's website: www.deps.gov.bn.*

CONSUMER PRICE INDEX (CPI)

DECEMBER AND ANNUAL 2019



CPI measures the changes in prices of a fixed basket of goods and services purchased by the majority of household in Brunei Darussalam.



CONSUMER PRICE INDEX (CPI)

DECEMBER 2019



TOP 3 CONTRIBUTORS TO YEAR-ON-YEAR CHANGES

1



Restaurants and Hotels

▲ 5.2

Prices of selected dishes in restaurants and cafe; outdoor catering services; and accomodation services

2



Furnishings, Household Equipment and Routine Household Maintenance

▲ 2.7

Price of textiles; household utensils; and non-durable household goods

3



Recreation and Culture

▲ 1.6

Stationery; package holidays; and articles for pets

CONSUMER PRICE INDEX (CPI)

ANNUAL 2019



TOP 3 CONTRIBUTORS TO PERIOD-ON-PERIOD CHANGES

1



Transport



Prices of motor cars; air tickets; spare parts of vehicles; and lubricants

2



**Housing, Water, Electricity,
Gas & Other Fuels**



Prices of house rentals; materials for maintenance and repair of dwelling and

3



**Food & Non-Alcoholic
Beverages**



Prices of biscuits; noodles; vegetables; eggs; and dairy products