



SIARAN MEDIA

Media Release

INDEKS HARGA PENGGUNA

Consumer Price Index
(Jan 2015=100)

JULAI 2020
July 2020



**SIARAN MEDIA
JABATAN PERANCANGAN EKONOMI DAN STATISTIK
KEMENTERIAN KEWANGAN DAN EKONOMI**

**TAJUK UTAMA: INDEKS HARGA PENGGUNA (IHP) MENINGKAT SEBANYAK 2.0 PERATUS
TAHUN-KE-TAHUN BAGI BULAN JULAI 2020**

1. IHP bagi bulan Julai 2020 meningkat sebanyak 2.0 peratus tahun-ke-tahun berbanding dengan bulan Julai 2019. Harga Makanan dan Minuman Ringan mencatatkan peningkatan sebanyak 2.2 peratus. Manakala, harga Bukan Makanan mencatatkan peningkatan sebanyak 1.9 peratus.
2. Peningkatan IHP adalah didorong oleh peningkatan harga dan kos Pelbagai Barangan dan Perkhidmatan (10.6 peratus); Makanan dan Minuman Ringan (2.2 peratus); dan Pengangkutan (2.2 peratus). Walau bagaimanapun, peningkatan IHP ini diimbangi oleh penurunan harga dan kos Restoran dan Hotel (1.1 peratus) dan Rekreasi dan Kebudayaan (0.2 peratus).
3. Kenaikan bagi harga Pelbagai Barangan dan Perkhidmatan adalah sebahagian besarnya disebabkan oleh peningkatan harga barangan kemas; insuran; dan lain-lain perkhidmatan.
4. Manakala kekurangan bekalan yang disebabkan oleh barangan import yang terhad berikutan situasi jangkitan wabak COVID-19 di negara ini dan negara-negara jiran, telah menyebabkan kenaikan kepada beberapa harga Makanan dan Minuman Ringan terutama sekali bagi harga minuman ringan; sayur-sayuran; dan daging yang diimport.
5. Peningkatan harga Pengangkutan pula adalah disebabkan oleh kenaikan harga pengangkutan penumpang melalui darat dan juga pengangkutan penumpang melalui udara bagi penerbangan terhad yang telah dijadualkan.
6. Bagi perubahan bulan-ke-bulan, IHP bagi bulan Julai 2020 menurun sebanyak 0.1 peratus berbanding dengan bulan Jun 2020. Indeks Makanan dan Minuman Ringan menurun sebanyak 0.4 peratus. Manakala, Indeks Bukan Makanan menurun sebanyak 0.02 peratus.

7. IHP mengukur perubahan harga barangan dan perkhidmatan yang dibayar oleh pengguna dalam satu tempoh masa yang ditetapkan dan dikumpulkan setiap bulan. Senarai barangan dan perkhidmatan dalam IHP adalah berdasarkan maklumat perbelanjaan purata sebuah keluarga yang diperolehi melalui Kajian Perbelanjaan Keluarga. Laporan penuh IHP bagi bulan Julai 2020 boleh didapati melalui laman sesawang JPES: www.deps.gov.bn.

INDEKS HARGA PENGGUNA (IHP)

JULAI 2020



IHP mengukur perubahan harga pada sebakul tetap barangan dan perkhidmatan yang dibeli oleh sebahagian besar isi rumah di Negara Brunei Darussalam.



Sumber: Jabatan Perancangan Ekonomi dan Statistik,
Kementerian Kewangan dan Ekonomi

INDEKS HARGA PENGGUNA (IHP)

JULAI 2020



Tiga Penyumbang Utama Kepada Perubahan Tahunan

1



Pelbagai Barangan dan Perkhidmatan

▲ 10.6

Harga Barang Kemas, Insuran, dan Lain-lain Perkhidmatan

2



Makanan dan Minuman Ringan

▲ 2.2

Harga Minuman Ringan, Sayur-sayuran dan Daging yang diimport

3



Pengangkutan

▲ 2.2

Harga Pengangkutan Penumpang Melalui Darat dan Udara

Sumber: Jabatan Perancangan Ekonomi dan Statistik,
Kementerian Kewangan dan Ekonomi



MEDIA RELEASE
DEPARTMENT OF ECONOMIC PLANNING AND STATISTICS
MINISTRY OF FINANCE AND ECONOMY

HEADLINE: CONSUMER PRICE INDEX (CPI) INCREASED BY 2.0 PER CENT
YEAR-ON-YEAR IN JULY 2020

1. *The CPI in July 2020 increased by 2.0 per cent year-on-year compared to July 2019. Prices of Food and Non-Alcoholic Beverages increased by 2.2 per cent. Meanwhile, Non-Food prices increased by 1.9 per cent.*
2. *The CPI increase was largely attributed to increases in the prices and costs of Miscellaneous Goods and Services (10.6 per cent); Food and Non-Alcoholic Beverages (2.2 per cent); and Transport (2.2 per cent). However, this was moderated by the decrease in prices of Restaurants and Hotels (1.1 per cent) and Recreation and Culture (0.2 per cent).*
3. *The rise in prices of Miscellaneous Goods and Services was mainly due to an increase in the price of jewellery; insurance; and other services.*
4. *Meanwhile, limited supply of goods due to reduced imports following the COVID-19 situation in the country and neighbouring countries has led to a hike in the prices of Food and Non-Alcoholic Beverages, mainly imported soft drinks; vegetables; and meat.*
5. *The increase in the prices of Transport was due to the increase in the prices of passenger transport by land and also passenger transport by air of a few limited flights scheduled.*
6. *On a month-on-month basis, the CPI in July 2020 decreased by 0.1 per cent compared to June 2020. The Food and Non-Alcoholic Beverages Index decreased by 0.4 per cent. Meanwhile, the Non-Food Index decreased by 0.02 per cent.*

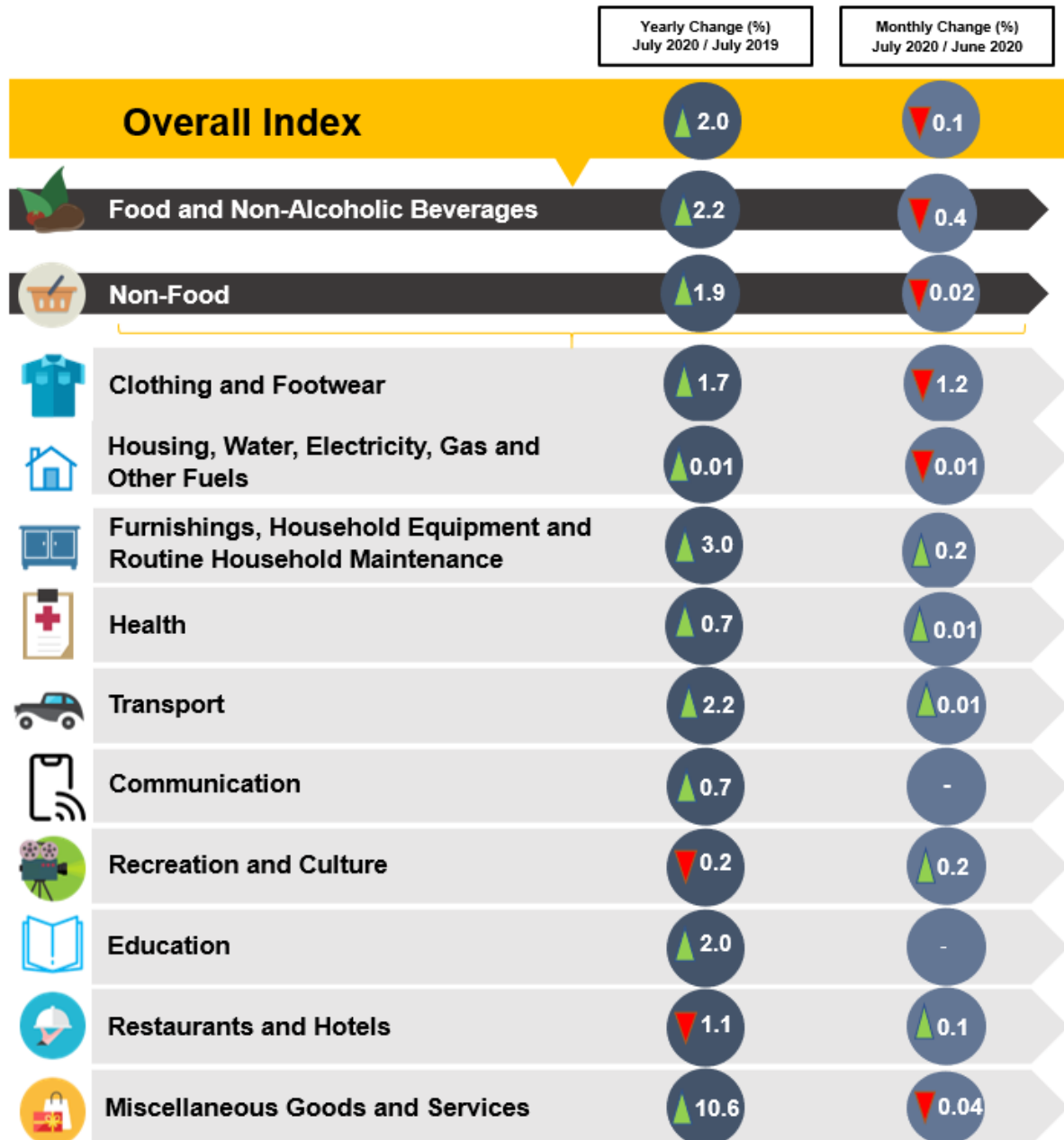
7. *The CPI is a measure of price changes of goods and services paid by the consumer in a specified period and compiled on a monthly basis. The list of goods and services in the CPI is based on the average expenditure per household from the Household Expenditure Survey (HES). The CPI full report for July 2020 is available from DEPS's website: www.deps.gov.bn.*

CONSUMER PRICE INDEX (CPI)

JULY 2020



CPI measures the changes in prices of a fixed basket of goods and services purchased by the majority of household in Brunei Darussalam.



Source: Department of Economic Planning and Statistics,
Ministry of Finance and Economy

CONSUMER PRICE INDEX (CPI)

JULY 2020



TOP 3 CONTRIBUTORS TO YEARLY CHANGES

1



Miscellaneous Goods and Services

▲ 10.6

Prices of Jewellery, Insurance, and Other Services

2



Food and Non-Alcoholic Beverages

▲ 2.2

Prices of Imported Soft Drinks, Vegetables and Meat

3



Transport

▲ 2.2

Prices of Passenger Transport by Land and Air

Source: Department of Economic Planning and Statistics,
Ministry of Finance and Economy